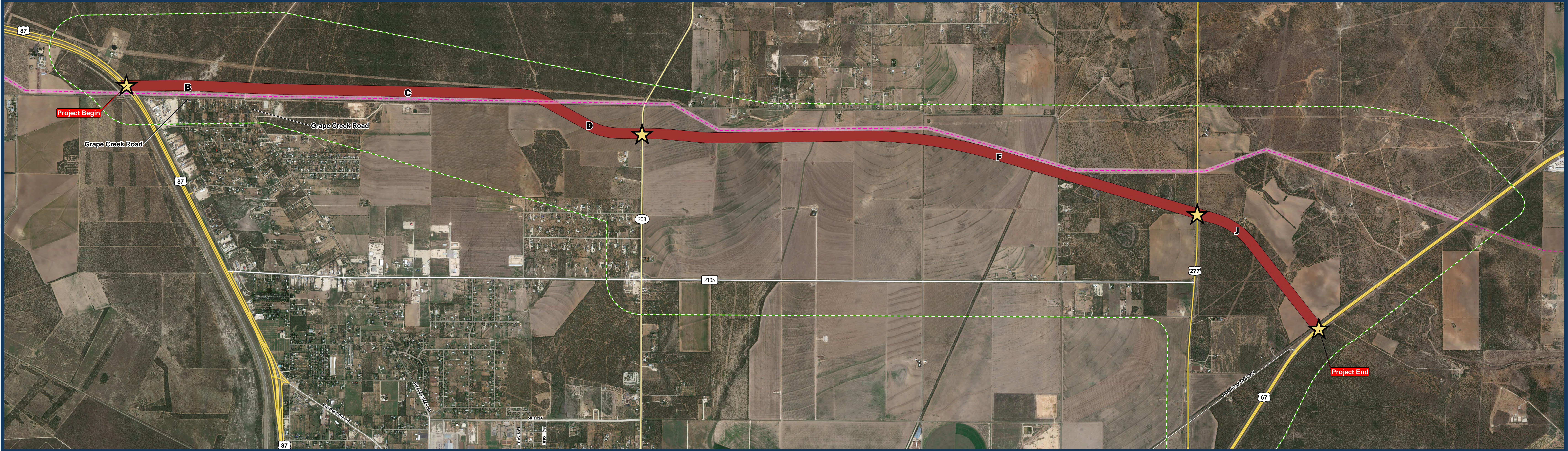




TEXAS DEPARTMENT OF TRANSPORTATION

PREFERRED CONCEPT (B-C-D-F-J) - MAROON

Preferred Concept Exhibit
US 67/US 87 Relief Route Study
Tom Green County
San Angelo District



- ★ Potential Future Grade Separated Interchange
- Study Area Boundary
- Transmission Power Line
- Transmission Line Easement

Preferred Concept (B-C-D-F-J) - Maroon

0 500 1,000 2,000 3,000 4,000
Feet

